



## Table of Contents

Welcome to the OptiShot Infrared Golf Simulator.....	3
Common Sense Warning.....	3
Components of the OptiShot Infrared Golf Simulator.....	4
Connecting and Setting Up the OptiShot.....	5
Process.....	5
Installing the Software .....	5
Setting up the Hardware.....	5
Register with Dancin' Dogg .....	7
Different Modes of OptiShot.....	7
Play Game.....	7
The Practice Zone .....	7
Starting the Game .....	8
To start the game.....	8
Playing the Game.....	8
Before You Begin .....	8
To play the game.....	8
Practicing swings in the Practice Zone .....	9
To Access the Practice Zone .....	9
The Practice Zone Process .....	9
To practice .....	9
Practice Hole Menu .....	11
Access the Practice Hole Menu .....	11
To clear all balls.....	11
Custom Shot Setup.....	11
To set up a shot .....	11
Virtual Club.....	12
Viewing Statistics .....	13
To View your Swing Details .....	13
To View and Clear Session Summary .....	13
To Delete a Line on your Session Summary .....	13
To Save Your Session Summary Data.....	14
Preferences .....	14
Multi-Player Feature.....	18
Club Set Customization .....	18
Further Tuning of Your Clubs.....	19
Frequently Asked Questions .....	20
Supported Configurations .....	20
Keyboard Shortcuts.....	21
Troubleshooting Section .....	22



## OptiShot Infrared Golf Simulator Online Help

Installation .....	22
Optimizing your Practice Environment .....	23
The Reflective Qualities of your Irons.....	23
Best Possible Lighting Conditions.....	23
Test Your Lighting.....	23
The Height of Your Stance.....	24
Tips for Playing EA Sports Tiger Woods PGA Tour Game .....	24
Settings within the Tiger Woods PGA Tour Game .....	24
To do this, set up the following: .....	24
The Best Way to Practice .....	25
Playing the Game Tips and Troubleshooting .....	25
Checking for Updates .....	26
Support .....	26
Uninstall the Software.....	26
To Uninstall the OptiShot Software.....	26
Proprietary Statement.....	27



## Welcome to the OptiShot Infrared Golf Simulator

The OptiShot Infrared Golf Simulator is the most complete home golf simulation for golfers of all skill levels. It is the first simulator of its kind to combine swing data, and gaming all in one system that can be used at home.

OptiShot has an infrared swing pad that you plug into one of those rectangle holes (geeks call that a USB port) in the side or back of your computer. You then put the CD in your computer and follow the step-by-step instructions. In less than 10 minutes, you will be swinging your golf club on Pebble Beach or St Andrews golf courses, to name just a few.

So imagine, swinging your clubs, watching your stats, seeing your score, practicing your shot and having fun. So simple, what are you waiting for? Use our simple Quick Start Guide or the online Help to guide you through setting up and configuring and using the system.

### Common Sense Warning

Swinging a golf club indoors is inherently dangerous. All appropriate care should be taken. Keep other people and pets clear at all times. Even skilled golfers will miss hit a golf ball so using a soft ball is recommended to ensure misses do not harm or injure property or persons. Also, please note that golf can lead to certain injuries, including repetitive motion injury ("golfer's elbow"). Use of the Product is AT YOUR OWN RISK. Please carefully review the End User License Agreement packaged with the product for further information.



## Components of the OptiShot Infrared Golf Simulator

The following lists all the components you need to begin using the OptiShot Infrared Golf Simulator:

Included with the purchase of the OptiShot:

- OptiShot Infrared Golf Simulator Software (Single CD)
- EA Sports™ Tiger Woods PGA Tour® Golf Game (Single DVD) (Not included in all purchases)
- Optical Swing Pad
- Practice Balls
- Rubber Tees
- Quick Start Guide
- 10' USB cord

You supply:

- Golf club or clubs
- Passion for golf and desire to have fun with friends
- Room to swing a golf club
- Computer to run the golf game and hook up the swing pad

Additional supplies available:

Visit our website at <http://www.dancindogg.com/store> to purchase additional supplies and accessories for your OptiShot simulator.

---

---



## Connecting and Setting Up the OptiShot

Once you have joined the ranks of golfing fanatics and purchased the OptiShot Infrared Golf Simulator package, just follow a few simple steps of installing the software and connecting the hardware to be up and running in order to tee off.

### Process

1. Install the OptiShot Infrared Golf Simulator CD.
2. Install the EA Sports™ Tiger Woods Golf Game, unless you already have it installed.
3. Connect the Swing Pad USB cord to your USB port on your computer.
4. Set up the Infrared Swing Pad, which includes:
  - Insert the rubber tee through the bottom of the Swing Pad (optional)
  - Place the foam practice ball on the tee or you can just swing from the turf on the pad.

---

**NOTE:** If you choose to hit balls off the turf, be sure to place the ball at the same position on the turf that the tee would be to ensure that the sensors detect the ball.

---

5. Start the OptiShot Software.
6. Select the Practice Zone or Play Tiger Woods PGA Tour Game from the main screen.
7. Select a club and Tee Off.

### Installing the Software

1. From the OptiShot Infrared Golf Simulator CD-ROM, double-click the setup.exe. The InstallShield Wizard begins which will guide you through the install process.
2. Follow the instructions on the screen. On the final page of the wizard, the **Launch the program** check box is selected by default. If selected, the application will launch when you click **Finish**.

---

**NOTE:** The first time you run the program you will be prompted for your Product Key. This key is located on the back of the OptiShot Infrared Golf Simulator CD case. You will also be presented with a **Dancin' Dogg Registration** page. Registering with Dancin' Dogg allows the company to send you emails alerting you of updates and other changes to the software. Your information will not be sold or distributed to other companies. Click **Skip** to move on to the Main Menu or complete all required information, and then click **Register**.

---

3. Remove the CD from the drive.
4. Insert the DVD of the EA Sports Tiger Woods game and follow the instructions on the screen.

### Setting up the Hardware

1. Turn the Infrared Swing Pad over. Insert the appropriate size tee in the only round hole in the bottom of the pad until it is flush against the device and sticking above the turf.



---

**NOTE:** You do not have to use a tee. You can hit your ball directly off the turf. Hitting off the turf may slow the club head speeds down as the extra resistance slows the club down through the two rows of sensors.

---

2. Lay the Infrared Swing pad in the direction that you are going to swing. An arrow on side of the pad indicates the direction that you should swing. If you purchased the precision cut mat, place the Infrared Swing Pad into the cutout of the mat.
3. Insert the USB cable cord in the side of the Infrared Swing pad. Insert the other side of the cord in the USB port of your computer.
4. For additional security of the USB to Swing Pad connection you can use one of the provided zip ties to secure the USB connection. See below:



5. Run the OptiShot software by double-clicking the desktop icon. The main menu will appear.

---

**Common Sense Warning:** Swinging a golf club indoors is inherently dangerous. All appropriate care should be taken. Keep other people and pets clear at all times. Even skilled golfers will miss hit a golf ball so using a soft ball is recommended to ensure misses do not harm or injure property or persons. Also, please note that golf can lead to certain injuries, including repetitive motion injury (“golfer’s elbow”). Use of the Product is **AT YOUR OWN RISK**. Please carefully review the End User License Agreement packaged with the product for further information.

---



## Register with Dancin' Dogg

When you first launch OptiShot, you are presented with a **Registration** dialog box. By registering with Dancin' Dogg, it allows us to send you email when there are updates or when you are eligible for special offers.

To access the **Registration** page:

If you skipped the **Dancin' Dogg Registration** page when you launched the software the first time, then you can access it again by doing the following:

1. From the Main Menu, click the **Menu** button, and then click **Register Product**.

---

**NOTE:** You can also access this page from the **Menu** button within the **Practice Zone**.

---

## Different Modes of OptiShot

There are two modes to the OptiShot software:

**Play Tiger Woods PGA Tour Game:** Playing directly with the EA Sports Tiger Woods PGA Tour game using your own golf clubs.

**Practice Zone:** Using OptiShot to practice and view shots taken with your clubs.

---

**Additional Information:** For more information regarding purchasing and upgrades, visit our web site at <http://www.dancindogg.com>.

---

## Play Game

The [Play Tiger Woods PGA Tour Game](#) mode lets you play on such courses as Pebble Beach, St. Andrews, and TPC at Sawgrass within the EA Sports Tiger Woods Golf Game. Instead of using your mouse, as you would normally do with the game, you will step up to the Infrared Swing pad, with your own club at home and your swing gets detected and sent into the game.

## The Practice Zone

The **Practice Zone** allows you to do just that, practice, practice, practice. The **Practice Zone** allows you to practice swings and view swing details, such as face angle, tempo, and distance traveled, and so on, of the ball including displaying a bird's eye view of that ball. It provides detailed explanations of each of the displays and how they are related to the golf swing. This allows a golfer to discover a cause-and-effect relationship with the golf swing and the ball flight. Each practice session is tracked with detailed statistics that can be displayed anytime during the session to show the golfer's averages and tendencies. Voice commentary is also provided, if desired, for immediate gratification of knowing your shot output.



## Starting the Game

### To start the game

1. Double-click the OptiShot icon on your desktop.

---

**NOTE:** You can also access the OptiShot software if you click **Start**, **All Programs**, **Dancin' Dogg Golf**, **OptiShot**, and then click **OptiShot**.

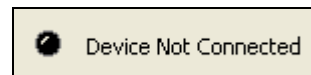
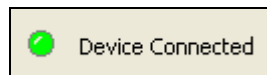
---

2. From the Main Menu that appears, select **Practice Zone** or [Play Tiger Woods PGA Game](#).
3. If you do not have the Infrared Swing pad connected or it is not connected correctly, then a dialog box appears letting you know that the USB cable is not connected. If it is not connected properly, then none of your swings on the pad will register within the game or within the Practice Zone. Click **OK** for this dialog box.

---

**NOTE:** On the Main Menu, a green light is displayed that says **Device Connected** if the device is connected and recognized by the program. If it is not connected properly, then it will say **Device Not Connected**.

---



## Playing the Game

Playing the game allows your swings to simulate swings within the EA Sports Tiger Woods Golf Game. For more information on how to play the EA Sports Tiger Woods Golf Game, refer to their documentation.

The process for setting up and playing the game with OptiShot is as follows.

### Before You Begin

Be sure to set up the Infrared Swing Pad appropriately. Refer to the [Setting up the Hardware](#) section.

If playing with more than one person, understand the multi-player feature of OptiShot so you can quickly change between players with different preferences.

### To play the game

1. To play the game, click **Play Tiger Woods PGA Tour Game**. The **Play Game** screen appears.

---

**NOTE:** Play Game will be grayed out if you do not have any EA Sports Tiger Woods Golf Games installed.

---

2. In **Game Selection** section, select the appropriate Tiger Woods PGA Tour version to use. This section is grayed out if only one version is detected.



---

**NOTE:** For additional tips, you can refer to a [Playing the Game Tips and Troubleshooting](#) topic within Help.

---

3. Click **Play**. The EA Sports Tiger Woods game starts and the OptiShot software is minimized. You have many options within this game, such as **Practice**, **Play game**, **Career mode**, and so on. The OptiShot works in any mode that you can use the mouse within the EA Sports Tiger Woods game. As soon as it is your turn to swing, instead of using your mouse, as you would normally do with the game, you will step up to the swing pad, golf club in hand, place the practice ball on the rubber tee (or turf), and swing.

## Practicing swings in the Practice Zone

### To Access the Practice Zone

1. To play in the **Practice Zone**, click **Practice Zone**. The **Practice Zone** appears.
2. Follow the practice zone process to continue.

### The Practice Zone Process

The **Practice Zone** is the place where you can practice your shots as many times as you want without actually keeping score. You can take a few swings or use it to take many swings to watch patterns.

In the **Practice Zone**, you will be able to hear feedback as to where your golf ball went, such as nice shot, slight fade, at target, and so on. Additional statistics are also recorded including tempo, face angle, club head speed, path, distances traveled, and so on. A graphical display is also available and viewable from several feet back so you can see the direction and arc of the ball.

All descriptions and displays are recorded so you can replay the shot for additional review.

---


**NOTE:** The swing details are not displayed or recorded when the EA Sports Tiger Woods Game is active. Swing details are only recorded when you are using the **Practice Zone**.

---

### To practice

1. Select a club from the **Select Club** button, located beside the **Menu** button in the lower left-hand corner of the **Practice Zone**. This menu will display the clubs available from the current club set assigned to the active player.



2. Click the golf ball button,  , to choose shot type, and ball type.

---

**NOTES:** By telling the system these two options, the system can adjust its calculations to provide more accurate feedback.

- Select a shot type, such as **Low Shot**, to allow for practicing for conditions such as playing into the wind. The shot type also affects the distance traveled.
-



- 
- The ball type indicates the type of ball you are using, a foam ball like the one provided with the Shot Making Simulator, or a real golf ball. It is important to select the proper ball type as the difference in mass between a foam practice ball and a real golf ball has a noticeable effect on the speed calculation.
- 

3. Select whether or not you want to hear how your shot went among other additional audio preferences. From **Menu**, select [Preferences](#).

---

**NOTE:** You must have speakers connected in order to hear the sound. You'll hear things like "Nice shot!", "Slight fade", "At target", and so on, depending on what audio preferences you select. Because what constitutes a fade or a slice is personal, some shot type descriptions may not match your expectations.

---

4. Select the **Player Orientation**, whether you are golfing right-handed or left-handed. To do so, from **Menu**, select [Preferences](#). Select the **Player** tab.
5. Step up to the Infrared Swing Pad, place the ball on the tee (or on the turf), address the ball, and take your shot. A bird's eye view of you shot is displayed and if sound is selected, you will be able to hear how your shot was received.

---

**NOTE:** A green light on the Optical Swing Pad is displayed when the shot is registered. The club must pass both sets of optical sensors on both sides of the turf to register. If a red light comes on it means the input could not be understood. This can be caused by lighting issues or not enough data detected. In the case of not enough data you will also hear the sound of a club swinging and not hitting a ball.

---

#### NOTES:

In the [Practice Session Details](#) section, a running log of how many shots you have taken is recorded.

The **Session Summary** section provides a graphical view of percentage of shots that were straight, to the left, and to the right.

The **Last Swing Details** section captures additional details about your shot, such as:

- **Speed:** The speed of the club head in miles per hour
- **Tempo:** The time it takes for the club to return to strike the ball from the take away.
- **Face Angle:** in degrees and open or closed
- **Path:** The path of the ball, such as straight, outside in, or inside out.
- **Distance Traveled:** How far in yards did the ball carry.
- **Yards off Target:** How many yards or meters left or right off of the intended target line.
- **Distance to Pin:** How many yards or meters are there left to the pin.
- **Face Contact:** Indicates approximately where on the face of the club the ball was struck. Shots hit off-center towards the heel or toe of the club will not travel as far as shots struck on the center of the face.



## Practice Hole Menu

The **Practice Hole** button allows you to select where you want to start your practice swings from (Front Tee Box, Middle Tee Box, Back Tee Box), what hole you want to practice on, and move the target.

### Access the Practice Hole Menu

There are two ways to access the **Practice Hole** options:

Select **Practice Hole** button, and then select an option.

Right-click the **Shot Shape** graphic. The **Practice Hole** menu appears. Select your options.

---

**NOTE:** There are several short-cut keys that allow you to select your options. Refer to the [Keyboard Shortcuts](#) topic for a listing of them all.

---

The **Shot Shape** section of the screen allows you to see all the balls for each shot.

### To clear all balls

To clear all the balls from the **Shot Shape** graphic:

From the **Practice Hole** menu, select **Show All Ball Positions**. If selected, then all balls will appear. If not selected, then no balls will appear.


## Custom Shot Setup

During the course of a round you may be faced with only one or two – or as many as ten or twelve – shots requiring shot-making and shot-shaping skills. How well or not you are able to handle these shots may make a big difference in your score and how much fun you have playing the game.

With OptiShot you can practice the same shot over and over again.

### To set up a shot



1. Select the ball type, , and your club, such as 7 Iron.
2. Using your mouse, click the **Shot Shape** graphic to set your target - where you want the ball to go.
3. While holding the left mouse button down, drag your mouse to the location on the graphic to mark a point on the course where you want to take your shot, meaning where you are standing. So now you have a target graphic and a line from that target to another spot on the course. The screen displays how long that shot is, such as 145 Yards.
4. To shape a shot where you start the shot right or left of target and curve it toward the target. Select an initial aim line. The aim line is the direction you intended to start your shot on. It may be to the right of the target or it may be straight at the target.



*To do this:*

- Use the LEFT or RIGHT arrow keys on your keyboard to move to where you want to aim. You will see the endpoint of the line move to the right or left of the target.
5. Step up to the Infrared swing pad, and take your shot.

OptiShot shows the precise path of the shot, gives you the distance you hit it, sees what the angle of the clubface was at impact, and sees how hard you hit the ball (club head speed).

---

**NOTE:** Did the ball go too far right or left? Was it longer or shorter than you had hoped? Try focusing on opening or closing the clubface a degree or two or three. Swing harder or softer or try another club. With every shot, your ball travels closer and closer to your intended target.


---

## Virtual Club

You can practice without a club using the Practice Zone as well. No matter where you are, if you can turn on a PC you can work on your shot making skills with OptiShot.

While there is no substitute for actually swinging at a ball, this 'virtual' shot making practice combined with your improved perception and appreciation of clubface angles and swing speed at impact, will help you become a better shot maker.

**To Practice Your Shots Without a Club (similar to the Custom Shot Setup):**

1. Select the ball type,  and your club, such as 7 Iron.
2. Using your mouse, click the Shot Shape graphic to set your target - where you want you're shot to go.
3. While still clicking, drag your mouse to the location on the graphic to mark a point on the course where you want to take your shot, meaning where you are standing. So now you have a target graphic and a line from that target to another spot on the course. The screen displays how long that shot is, such as 145 Yards.
4. Select an initial aim point. An aim point is where you would be adjusting your shot to aim at the hole. It may be to the right of the target to allow for wind conditions, or it may be straight ahead.

*To do this:*

- Use the LEFT or RIGHT arrow keys on your keyboard to move to where you want to aim. You will see the endpoint of the line move to the right or left of the target.
5. From the **Select Iron** button, select **Virtual Club**. The **Virtual Swing Generator** dialog box appears.

---

**NOTE:** You can also access **Virtual Club** from the Practice Hole button.

---

6. Within the **Virtual Swing Generator** dialog box, select an iron, such as 3-iron.



7. Identify your swing path and face angle using the sliders. For example, if you hit the ball with the face open 2 degrees, move the **Face Angle** slider slightly to the right.
8. In the **Club Head Speed** field, estimate a swing speed, such as 84 MPH.
9. Click **Swing** to see where you're shot lands.

---

**NOTE:** Based on the information you entered, the actual flight path and distance of the ball will appear on your PC monitor.

---

10. Repeat the procedure to make adjustments to the target, aim, or starting point. You must close the **Virtual Swing Generator** dialog box to make the changes and then access it again.

## Viewing Statistics



Once you have made some swings, you can view your swing details either in real-time or view the last few swings.

---

**NOTE:** The swing details are not recorded when the EA Sports Tiger Woods Game is active. Swing details are only recorded when you are using the Practice Zone.

---

### To View your Swing Details

1. From the **Practice Session Details** section, use the left and right arrows to view the swings. As you click a single arrow, the previous or next swing's  details appear in the **Last Swing Details** section, such as Yard off Center and Speed change as well as the actual shot shape and face angle and path in the graphical interface.
2. Click the **Session Start** arrow  to view the first or last swing's detail.

### To View and Clear Session Summary

1. To view a session summary, click **Summary** in the **Practice Session Details**. The **Session Summary** page appears to view the averages of all your swings.
2. Click **Close**.
3. To clear the summary information, click **Clear**.

### To Delete a Line on your Session Summary

If you made a bad swing or perhaps accidentally did a practice swing and it was recorded, you can remove the statistics to adjust your averages.

1. From the **Session Summary** page, click **Edit**. The **Edit Session Details** page appears.
2. Select a line or CTRL + click to select multiple lines, and then click **Delete**.
3. Click **OK** to save your changes.



## To Save Your Session Summary Data

1. To save the sessions summary data, from the Session Summary page, click **Export**. A dialog box appears.
2. Save the CSV file to your local computer. You can then use a spreadsheet to open and view this file. (Microsoft Excel for example.)

## Preferences

The Preferences page consists of several tabs of settings for configuring various aspects of the OptiShot software. Preferences are available from the **Practice Zone**, **Menu** button as well as from the **Main Menu**, **Menu** button.

You can reset your preferences to all of the default preferences, by clicking the **Reset** button in the Preferences dialog box.

Option	Description
<b>Audio Tab</b>	
Play golf shot description after each swing	Not selected by default. Provides a description without commentary on the swing details after each shot, such as Draw, Fade, and so on.
Provide post shot commentary after each swing	Not selected by default. Provides commentary about the swing, such as "Could have been worse", "Oh, baby, that's long", and so on.
Play golf swing sound effect when swing detected	Selected by default. Provides a "swooshing" sound when your swing is detected by the Optical Swing Pad. This is helpful to know whether the swing has been detected and logged in the system.
Audio Voice	Select <b>Male</b> or <b>Female</b> for the gender that you want to hear say the description and/or commentary. If you have either of the other audio options selected from above, the gender you select here is the voice you hear when you launch the software.
Play sound during application startup	Selected by default. When you first launch the application, a sound is played.
Play warning beep when excessive invalid	Selected by default. When we repeatedly detect invalid input a dialog box appears that



## OptiShot Infrared Golf Simulator Online Help

input detected	warns you and lists some of the possible causes, such as over-stimulated lighting conditions. When the dialog pops up, a warning beep is also played to alert you. This setting allows for that warning sound to be disabled.
Disable all shot feedback audio while using the game	This disables all audio while playing the EA Sports Tiger Woods PGA Tour game, but does not disable the audio feedback within the EA Sports Tiger Woods game.
<b>General Tab</b>	
Disable pop-up tooltip Help	When hovering your mouse over a field in the Practice Zone, such as Shot Shape, a tooltip appears that displays information about what that field is. Select this to not display those tooltips.
Automatic practice hole selection on club change	When this check box is selected, then when a user is in the Practice Zone and changes the club selection, the program will automatically change the hole being displayed to a hole that makes sense for the newly selected club. For example, if you change your club selection to a 7-iron, then the hole switches to a par 3 that has a length of 150-160 yards (normal hitting distance for this club) and automatically sets you up on a tee box for a shot of that length.
Clear previous swing data during waggle or takeaway	When checked the practice zone will clear the detailed swing data and club head display of all information regarding the previous swing whenever a waggle or takeaway for a new swing is detected. If you want the previous swing data to remain displayed until the new swing is detected, then uncheck this box.
Unit of Measure	Select unit of measure, either standard or metric, of what the ball flight is measured in, such as miles per hour versus kilometer per hour or yards versus meters.
Sensor Hover Action	This setting controls the action taken when you hold your club over the sensor switch on the optical swing pad. The sensor switch is



## OptiShot Infrared Golf Simulator Online Help

	<p>activated by hovering your club over the sensor located furthest from the golfer (right handed) in the row of sensors behind the golf ball. The action can be set to change the active player or can be disabled completely.</p>
Practice Ball Type	<p>This setting defines what type of practice ball you are hitting. Use the 'Foam Practice Ball' setting when practicing with very light foam or whiffle balls. Use the 'Plastic Practice Ball' setting when practicing with one of the more medium weighted plastic practice balls. This setting is only used if the 'Practice Ball' menu item is selected in the practice zone.</p>
<b>Game Tab</b>	
Distance and Forgiveness	<p>Used to adjust the distance and forgiveness sensitivity of how your shots are played into the EA Tiger Woods PGA Tour game. There are individual adjustments for each type of shot that are played in the game.</p> <p>Slide the <b>Distance</b> lever to adjust the relative length of a shot from longer to shorter.</p> <p>Slide the <b>Forgiveness</b> lever to adjust the relative distance a shot will move left or right as a result of an open or closed clubface.</p> <p>These settings are global and apply to all players in the game.</p>
<b>Players tab</b>	
<p>The players tab contains 4 individual player tabs providing the ability to define preferences for up to 4 players.</p>	
Player Orientation section	<p>Select <b>Right Handed</b> or <b>Left Handed</b>. This is important to be able to tell if the clubface and path were open or closed relative to the player. A left handed player will address the ball from the opposite side of the swing pad as a right handed player.</p>
Club Set	<p>This setting allows you to select which club set is assigned to a given player. A player can select from 4 different club sets each of which</p>



## OptiShot Infrared Golf Simulator Online Help

	can be customized using the customize button.
Full Shot Distance Adjustment	<p>This slider adjusts the distance that a player's full shots are played into the Tiger Woods game. This adjustment will override the global full shot distance adjustment found on the game tab.</p> <p>You can use this adjustment as a kind of handicapping tool allowing you to match up players of different abilities when playing the game.</p>
<b>Club Sets Tab</b>	
This tab is used to configure any of the club sets used by any of the players in the game. Customization of a players club sets can also be accomplished from the players tab.	
Player	Select which players club set are to be displayed in the Club sets list.
Club Sets	Lists the currently selected player's club sets. You can then select a club set and click the Customize button to bring up the club set customization screen.
<b>Privacy tab</b>	
Customer Experience Improvement Program	<p>How often have you used software and thought that you could have made it better? Added a feature here that would have helped you out more, designed it more intuitively, and wondered what were those designers thinking? Well, here's your opportunity. By selecting the check box in the Customer Experience Improvement Program, you are allowing us to access information about how you are using the software. We are not collecting any personal data nor is the data shared with anyone else, nor can we tell where the data is coming from, just that it is downloaded onto one of our servers. We use the information to analyze how user's use the application and use that information to make improvements to the application, such as what percentage of users are using a certain operating system, and time spent in the</p>



	Practice Zone. You must be connected to the Internet in order for that data to be collected.
--	--

## Multi-Player Feature

Using the Player Preferences you can now configure up to 4 different player configurations with each having different settings for **Player Orientation**, **Club Set**, and **Full Shot Distance Adjustment**. You can then switch quickly between the different player configurations using the Ctrl-F1 through Ctrl-F4 keys.

## Club Set Customization

Each player in OptiShot can be configured with one of 4 unique club set configurations each of which can be customized to match the exact clubs that you use to practice with.

A club set is a collection of 18 club definitions that define the clubs that you use when practicing with OptiShot. Think of them as the 14 clubs you regularly carry in your bag along with 4 slots for those other favorite and not so favorite clubs you occasionally swap in and out of your bag.

A club is defined by the following characteristics some of which are used by the Shot Making Simulator to more accurately calculate the results of swings made with those clubs:

- Club Name – a name that you assign to the club.
- Club Type – 3-Iron, 5-Wood, Hybrid, etc.
- Shaft Length – Length of the club shaft (i.e. 39 inches).
- Loft – Loft of the club in degrees (i.e. 27 degrees).
- Offset – the amount that the hosel is offset from the face of the club.
- Distance Adjustment – this can be used to adjust the OptiShot Practice Zone distance calculation by +/- 20% so you can dial in the distances calculated to exactly how far you hit your clubs.
- Game Club Speed Adjustment – this can be used to adjust the OptiShot club speed calculation in the EA Sports Tiger Woods game by +/- 20% so you can dial in the distances in the game to exactly how far you hit your clubs.
- Off Center Distance Adjustment – this can be used to adjust how the distance calculation is affected by off center hits.

---

**NOTE:** You must tune the distances per club in the Practice Zone and club speed per club in the EA Sports Tiger Woods game *SEPERATELY*. This allows you to get the very best results for both modes.

---

By default each player is provided with 4 default configurations to choose from. These are tuned to some of the more common types of club sets found today. These are:



- Muscle Back Clubs – Used by better players, these clubs are often referred to as blades and have a slight or no offset at all.
- Players Clubs – Used by a large number of players, these clubs have a small offset and usually a cavity or progressive cavity back.
- Game Improvement Clubs – Also a very common club favored by less experienced players, these clubs feature a larger offset and cavity back.
- Hybrid Iron Clubs – An increasingly popular club set, these clubs offer an average offset and replace the longer irons (usually 5-3) with hybrid irons.

From the players tab in the Preferences screen you can choose the club set that best matches the type of clubs you will be practicing with or you can choose to customize one of the club sets to more closely match the exact clubs you have in your bag.

## Further Tuning of Your Clubs

We have worked hard to provide defaults that should work very well for most players. If you like to have everything tweaked-out just right then you should consider fine tuning your clubs. The three club settings that most directly affect the performance of a club are **Offset**, **Distance Adjustment** and **Game Club Speed Adjustment** which directly affect the face angle calculation along with the distance traveled in the Practice Zone and EA Sports Tiger Woods game respectively.

## Suggestions for tuning your clubs

1. First try identifying and selecting a club set that best matches your clubs.
2. For each club, perform the following steps:
  1. Take a few swings with the club. Take care to make sure the face is as square as possible when you strike the ball. If you need to swing slower, that's fine.
  2. **Adjust the offset.** You may find that your club manufacture provides club specifications on their website. This is the most accurate source of this information. If not you can contact them and they can usually provide a specification sheet for your clubs.
  3. Does the ball flight and pattern match your usual pattern? If it is or you don't normally hit the ball consistently enough to know, then we suggest you do not change this setting.
  4. Using the **comma** and **period** keys on your keyboard you can adjust your offset and its affect on you ball flight. The **comma** key will decrease the offset (more fade) by .005 inches while the **period** key will increase the offset (more draw). Start by adjusting a very small amount like one tick (0.005), then take a few swings and check its affect on your ball flight.
  5. **Adjust the Distance Traveled**
  6. Is the distance traveled close to the distance you usually hit this club. If it is or you don't normally hit the ball consistently enough to know, then we suggest you do not change this setting.



## OptiShot Infrared Golf Simulator Online Help

7. Using the **Ctrl-Left** and **Ctrl-Right** keys on your keyboard you can adjust the distance your ball travels. The **Ctrl-Left** key will decrease the distance traveled by 1% while the **Ctrl-Right** key will increase the distance traveled by 1%.
8. Go into the EA Sports Tiger Woods Game in practice mode. Select different clubs and distances on the course and repeat the step 7 (above) for the Club Speed Adjustment to get the distances tuned in the game.
9. How will you know when you have it right? Once your ball flight and distance traveled are matching your usual pattern in both the Practice Zone and EA Sports Tiger Woods game, you are dialed in.

## Frequently Asked Questions

### *Is it possible to break a sensor?*

We have done extensive durability testing and have been unable to break a sensor.

If you somehow find a way to break a sensor, despite our best design efforts, the entire unit falls under our 30-day Money Back Guarantee as well as the 180 day Limited Warranty. If there are any issues beyond that, one can give us a call and we can quote a repair or replacement prices.

Our goal is to keep you loving your OptiShot Infrared Golf Simulator for years to come!

### *Do I have to buy a mat?*

No, but it is highly recommended. Using the product with the mat makes for the optimal ball striking experience.

To purchase equipment, visit us at <http://www.dancindogg.com/store>

## Supported Configurations

The minimum required specifications for the OptiShot Infrared Golf Simulator are a personal computer with the following:

- Windows XP (32 bit), Windows Vista (32 bit)
- 800 MHz processor
- 512 MB RAM
- DVD-Rom Speed: 8x
- At least 3 GB of hard drive space
- Sound: DirectX 9.0c compatible sound card
- Keyboard
- Microsoft™-compatible Mouse
- EA Sports Tiger Woods PGA Tour® 08 requires a video card with at least 64 MB of video RAM with DirectX 9.0c compatible driver and with ATI Radeon 8500, NVIDIA GeForce 3, GeForce 4, Ti or greater chipset.



## Keyboard Shortcuts

The following are keyboard shortcuts to be used with OptiShot.

Key	Action
F1	Displays the OptiShot context sensitive help screen.
F5	Displays the OptiShot Preferences screen. This keyboard shortcut will also work when the EA Sports Tiger Woods PGA Tour Game is active.
Home	Resets the target line to the center of the green or fairway on the Practice Hole/Shot Shape display
Left Arrow	Move the shot target position on the practice hole display 1 pixel left.
Right Arrow	Move the shot target position on the practice hole display 1 pixel right.
CTRL-Up Arrow	Increments the selected iron (7 Iron > 8 Iron > 9 Iron, and so on)
CTRL-Down Arrow	Decreases the selected iron (7 Iron > 6 Iron > 5 Iron, and so on)
CTRL-H	Changes what practice hole is displayed. Rotates through the 11 holes we ship with
CTRL-T	Changes the tee box used on the current practice hole (Rotates Front->Middle->Back)
CTRL-F	Changes the practice hole to the front tee box
CTRL-M	Changes the practice hole to the middle tee box
CTRL-B	Changes the practice hole to the back tee box
CTRL-P	Toggles on and off the display of previous hit ball positions (little white dots)
CTRL-V	Displays the <a href="#">Virtual Club Generator</a> dialog box.
CTRL-F1	Changes the active player to Player 1.
CTRL-F2	Changes the active player to Player 2.
CTRL-F3	Changes the active player to Player 3.
CTRL-F4	Changes the active player to Player 4.
CTRL-Comma	Decrements the full shot distance adjustment setting for full shots played into the Tiger Woods game. This adjustment only affects the current player preference and affects all full shots played into the game with all clubs.



## OptiShot Infrared Golf Simulator Online Help

CTRL-Period	Increments the full shot distance adjustment setting for full shots played into the Tiger Woods game. This adjustment only affects the current player preference and affects all full shots played into the game with all clubs. Use this for handicapping or getting a starting distance tuning spot then apply the per-club tuning (below) to refine.
CTRL-Left Arrow	Decrements by 1% the distance adjustment percentage for the currently selected club in the player's currently active club set. This can be used to conveniently tune the distance calculation for a given club. When in the EA Sports Tiger Woods game this will adjust the Game Club Speed Adjustment setting. This affects the distance traveled in the game. <b>Note:</b> The distance adjustment is limited to +/- 20 percent. The tunings for the Practice Zone and Game are separate and you may tune both.
CTRL-Right Arrow	Increments by 1% the distance adjustment percentage for the currently selected club in the player's currently active club set. This can be used to conveniently tune the distance calculation for a given club. When in the EA Sports Tiger Woods game this will adjust the Game Club Speed Adjustment setting. This affects the distance traveled in the game. <b>Note:</b> The distance adjustment is limited to +/- 20 percent. The tunings for the Practice Zone and Game are separate and you may tune both.
Comma	Decrements by .005 inches the offset for the currently selected club in the player's currently active club set. This can be used to conveniently tune the offset for a given club. <b>Note:</b> The offset is limited to a range between 0 and .4 inches.
Period	Increments by .005 inches the offset for the currently selected club in the player's currently active club set. This can be used to conveniently tune the offset for a given club.

## Troubleshooting Section

### Installation

If you set up the OptiShot software and you play the Tiger Woods game, but the player doesn't swing, check the following conditions:

**Swing:** Your golf club should pass over both set of sensors on each side of the turf. The green light on the Optical Swing pad indicates that it has detected the swing.

**Control Method:** Within the Tiger Woods game, make sure that the players 'Control Method' is set to 'True Swing (V)'.

**Lighting:** Refer to the [Lighting](#) section below for more information about Lighting.

**Direction of the Optical Swing Pad:** Make sure that the Infrared Swing Pad is facing the correct direction. The removable sticker indicates the direction in which you want to swing.



Basically, the long side of the swing pad should be facing your toes when you are in your stance.

**USB Port Connections:** Make sure that your USB port detects the device. The supported Microsoft Windows Operating Systems will display a message indicating that it has *Found New Hardware* when it detects the USB cable and the attached device.

### Optimizing your Practice Environment

The most important factors, on your end, to insure the most accurate shot making recreation and reporting are:

- The reflective quality of your irons
- The lighting in the room where you setup your OptiShot.
- The height of your stance

### The Reflective Qualities of your Irons

- Your irons don't have to be brand, spankin' new to provide a pinpoint accurate reading on the shot shape, distance, and direction of your swing - but the shinier the better.

### Best Possible Lighting Conditions

- The best lighting conditions for the most accurate reporting and recreation of your shots are fluorescent. You can purchase fluorescent bulbs that screw right into lamps and regular lighting fixtures at any home improvement center and often at the supermarket.
- Direct sunlight is an absolute no-no. Even indirect sunlight entering the room should be minimized.
- Make sure you do not have any shadows over the optical swing pad. Under no conditions should a golfer produce a shadow over the optical swing pad. (As the shadow moves with the golfer it will throw off the sensors.)
- Overhead lighting is preferable to side lighting. Side lighting can cause the ball to cast subtle shadows that can affect the readings of the sensor pad. If you are consistently getting readings showing your club face very open or closed, side lighting is a likely cause.

### Test Your Lighting

- Take three or four quarter swings (no ball required) with a mid iron with the face open. Take a look at the OptiShot Dashboard – does it provide a 'face open' reading?
- Repeat the procedure with a closed face. See if the reading on dashboard provides a 'face closed' reading.
- Now repeat the above two steps but this time using a ball. Are the readings you received consistent with what you observed without a ball?
- If the answer is 'yes', your lighting conditions are optimal and will provide the most accurate feedback. If the answer is 'no', then try adjusting your light level or moving your light sources a bit and repeat the procedure.



## The Height of Your Stance

The turf top of the optical swing pad is approximately 1.5 inches tall. For best results we recommend you build a stance to this approximate height. Some household items that can help you with this are:

- Front Door Welcome Mat
- Strips of old carpet

To practice lies where the ball is above your feet, reduce the stance mat thickness.

To practice lies where the ball is below your feet, increase the stance mat thickness.

## Tips for Playing EA Sports Tiger Woods PGA Tour Game

To achieve the most realistic experience in EA Sport Tiger Woods game, the player ability within the game must be set to **Advanced**. When you select players within the game the first time, the default ability type is novice. Change the setting to **Advanced**. The novice ability will produce longer straighter shots than the advanced player type.

Using the player ability types within the game allows two players of different abilities to play against each other.

OptiShot further helps this handicap of different abilities by being able to toggle between two OptiShot players configured with different Full Shot Distance Adjustment settings which affect the distance full shots will play into the game. Using the Ctrl-F1 – Ctrl-F4 hot keys you can quickly switch between players with different configurations adding another dynamic of handicapping to your game play experience.

## Settings within the Tiger Woods PGA Tour Game

To make your experience playing EA Sports™ Tiger Woods PGA Tour Game and OptiShot Simulator most enjoyable and easy to use, then the following settings within Tiger Woods PGA Tour game should be considered. If you want to play 1 to 18 holes alone or with friends and family, it is recommended to use the Custom Game Mode in Tiger Woods PGA Tour game.

### To do this, set up the following:

- From the main menu of the Tiger Woods game, select **Game Modes**, and then select **Custom**. The **Game Setup** page appears.
- Select **Game Type**, **Number of Holes**, **Mulligans** and **Gimmies**. We recommend you enable mulligans and 18 inch gimmies. Click **Next**.
- To add up to 4 golfers to your game and set their golfing ability, click the golfer in the **Selected Golfer** list, and then under **Difficulty**, **Golfer Detail**, select an option. **Intermediate** or **Advanced** are recommended.

**NOTE:** To achieve the most realistic experience in EA Sport Tiger Woods game, select **Advanced**. When you select players within the game the first time, the default ability type is novice. Change the setting to **Advanced**. The novice ability will produce longer straighter shots than the advanced player type. Using the player ability types within the game allows two players of different abilities to play against each other.



## OptiShot Infrared Golf Simulator Online Help

- Click **Next**. The **Courses** page appears.
- Select which course you would like to practice on as well as adjust your playing conditions. When done, click **Tee Off** and start playing!

You can also use OptiShot to play the many game modes such as Rivals Mode, PGA Tour, Online Play, and Practice. For more information on how to play these and other EA Sports Tiger Woods Golf Game Modes, refer to the EA Sports Tiger Woods PGA Tour documentation.

### The Best Way to Practice

One of the best ways to work on your shot making with the EA Sports Tiger Woods Golf Game is to use the Practice mode. In this mode, you can pick any shot on the course to practice over and over.

To access the Practice Mode:

- From the main menu of the Tiger Woods game, select **Game Modes**, then select **Practice**. The **Courses** page appears.
- Select which course you would like to practice on as well as adjust your playing conditions. With course selection made and adjustments to the playing conditions, select **Tee Off**. The tee box of the practice hole appears. The practice hole is determined by the Tiger Woods game. You can now start practicing.
- To practice shots anywhere on the hole, use you left mouse button to click anywhere on the golf hole overview on the right side of your screen. This will reposition your player to that point on the golf hole and allow you to start practicing shots from there.
- To change holes select **Menu > Holes** and select the hole you want to practice on.

### Playing the Game Tips and Troubleshooting

The following are some general notes about playing the EA Sports Tiger Woods game with the OptiShot Infrared Golf Simulator to make your game playing most enjoyable:

- When you hit a shot into a hazard in the EA Sports Tiger Woods game, a menu appears asking you if you want Re-Hit, Take the Nearest Relief, or Drop Here. If you attempt to take a swing while this menu is displayed, then your swing will not be recorded. Respond to the menu first using the mouse, and take your swing.
- You should align the player where you want to start your shots. To do this:
  - Select the arrow under the player's feet by clicking the mouse and moving the arrow with the mouse. Do this for full shots and putts. Align the player just like you would when playing your normal shot on the golf course. You can also use the Left and Right Arrow buttons to move the players aim left or right.
- If you are having trouble getting the game to play back the swing, but you hear the OptiShot swoosh sound every time you swing, then check that you do not need to drop the ball (above), and then hit the ESC key, and then try again.
- If you have a swing that you want to replay within the Tiger Woods game, when you get back to that player ready to take a shot you can press CTRL-M, and then you can take the previous shot again



## Checking for Updates

1. From the Menu button, select **Check for Updates**.
2. If an update is available a screen will appear displaying information about the available update.
3. Select the update that you want to download and click the download button.
4. You complete the install by double-clicking the EXE that was downloaded wherever you downloaded the update to, and then follow the instructions on the screen.
5. Depending on what components were updated, you may be prompted to restart your computer in order to view the changes.

## Support

For additional support, visit our website <http://www.dancindogg.com/support>. If you are unable to access our support site, you can also call our toll-free support line at 1-866-941-DOGG. *NOTE:* For any support questions on the EA Sports Tiger Woods game, please contact EA Sports, <http://support.ea.com>.

## Uninstall the Software

### To Uninstall the OptiShot Software

To uninstall, from your desktop, select **Start, Programs, Dancin' Dogg Golf, OptiShot, Uninstall OptiShot**. Follow instructions on the screen.

---

**NOTE:** This does not uninstall the EA Sports Tiger Woods Game. You must follow their uninstall instructions.

---



## Proprietary Statement

This document contains proprietary information and data that is the exclusive property of Dancin' Dogg™ Golf. No part of this document may be reproduced, transmitted, stored in a retrievable system, translated into any language, or otherwise used in any form or by any means, electronic or mechanical, for any purpose, without the prior written consent of Dancin' Dogg™ Golf.

The information contained in this document is subject to change without notice. Accordingly, Dancin' Dogg™ Golf disclaims any warranties, express or implied, with respect to the information contained in this document, and assumes no liability for damages incurred directly or indirectly from any error, omission, or discrepancy between the above product(s) and the information contained in this document.

© Copyright 2004 - 2008 Dancin' Dogg™ Golf. All rights reserved.